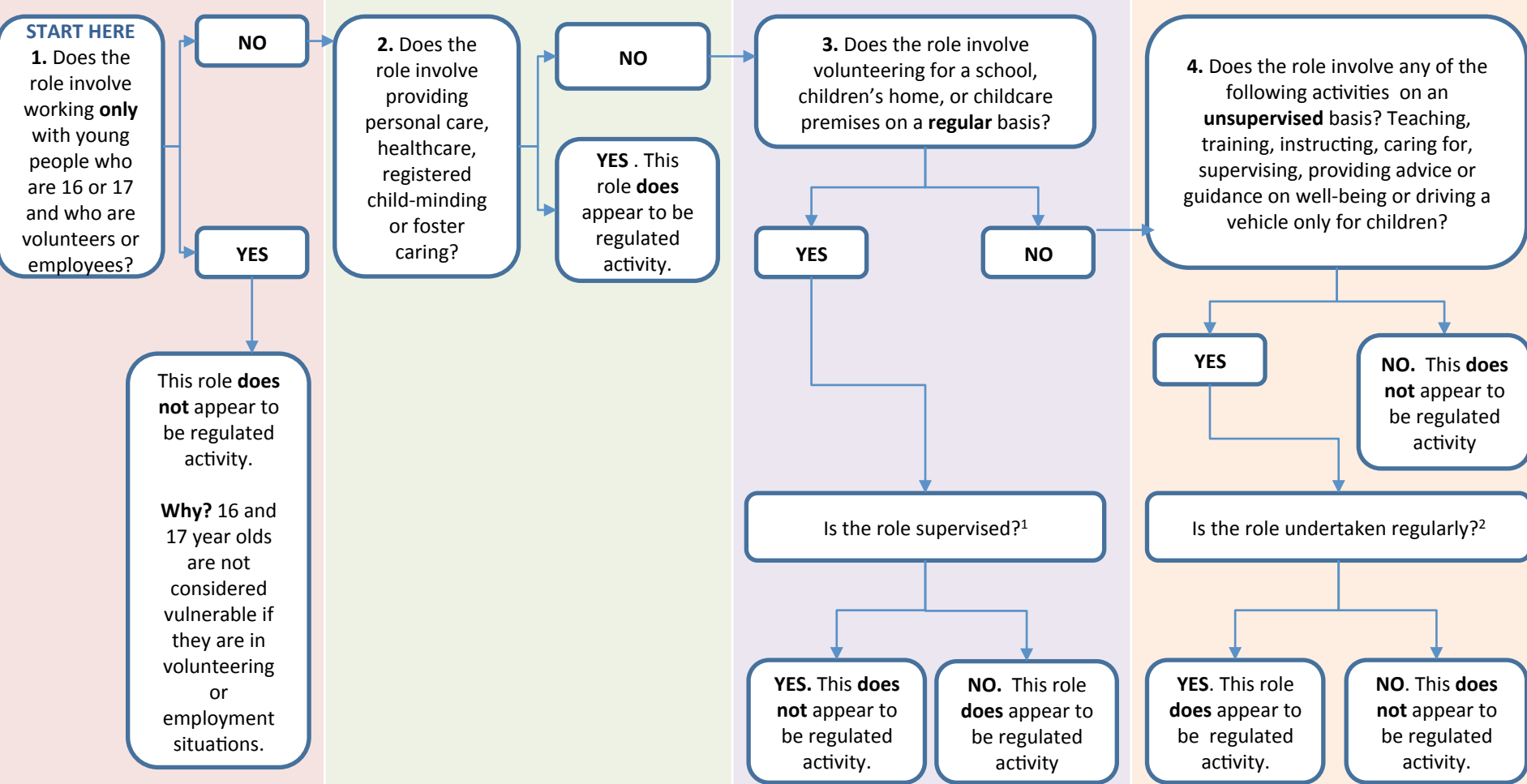


# Regulated Activity relating to children and young people

**Important** - this chart does not apply to family arrangements and personal non-commercial arrangements (these are not covered by the DBS system) and should be read in conjunction with the full guidance from the Department for Education, available via [www.education.gov.uk/childrenandyoungpeople/safeguardingchildren/a00209802/disclosure-barring](http://www.education.gov.uk/childrenandyoungpeople/safeguardingchildren/a00209802/disclosure-barring)



<sup>1</sup> Supervised means regular supervision by someone who themselves is in Regulated Activity. See the Department for Education’s guidance on supervision, available via [www.education.gov.uk/childrenandyoungpeople/safeguardingchildren/a00209802/disclosure-barring](http://www.education.gov.uk/childrenandyoungpeople/safeguardingchildren/a00209802/disclosure-barring)

<sup>2</sup> Regular means carried out by the same person frequently (once a week or more) or on four or more days in a 40-day period (or in some cases overnight).